



FEATURED PROJECT

**FROM 1969 TO PRESENT DAY, FLEMING CONSTRUCTION
GROUP HAS HELPED BUILD TULSA'S GREEN VALLEY CENTER**



FEATURED PROJECT

FROM 1969 TO PRESENT DAY, FLEMING CONSTRUCTION GROUP HAS HELPED BUILD TULSA'S GREEN VALLEY CENTER

OVERVIEW

In 1969, FCG completed the 500k square feet headquarters of the former tire and supply retailer, Otasco. This year, in partnership with Industrial Developers of Oklahoma (IDO), FCG returned to the Green Valley Center to add another 98k square feet of “big box” warehouse and distribution space.

FCG demolished Otasco's previous offices to make way for an energy efficient new build using a speculative fit-out for industrial use. The entire project was completed on-time and under budget with zero safety incidents despite ongoing supply chain disruptions due to the Covid-19 pandemic.

FEATURED PROJECT

FROM 1969 TO PRESENT DAY, FLEMING CONSTRUCTION GROUP HAS HELPED BUILD TULSA'S GREEN VALLEY CENTER

OVERVIEW

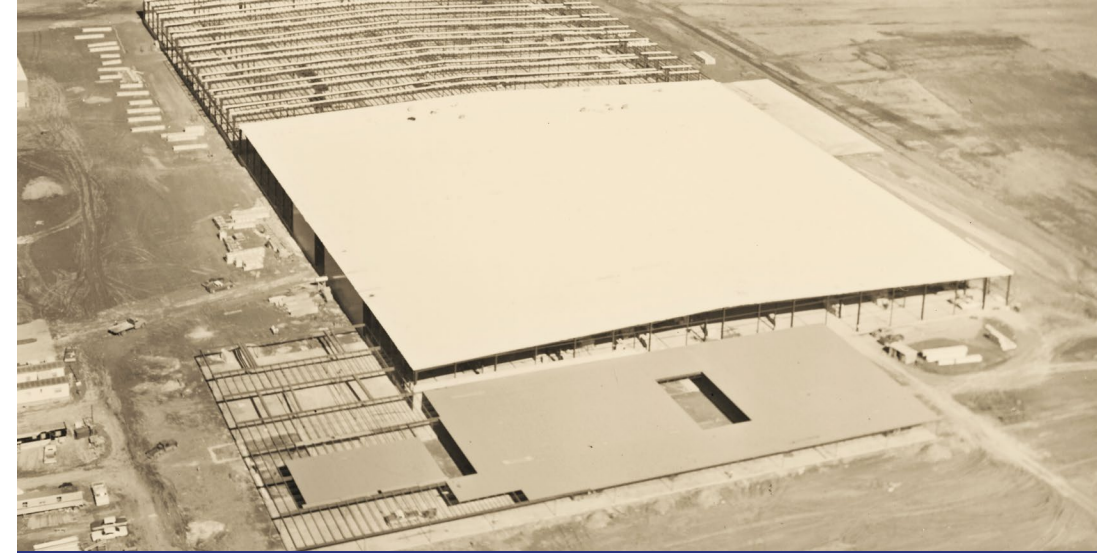
In 1969, FCG completed the 500k square feet headquarters for tire and supply retailer, Otasco. This year, FCG demolished the previous Otasco office area to make way for 98k square feet of warehouse and distribution space.

CATEGORY: DISTRIBUTION

LOCATION: TULSA, OK

CONSTRUCTION TYPE: BUILD TO SUIT, DESIGN/BUILD,
NEW CONSTRUCTION

SQUARE FEET: 98K



1969



2021

FEATURED PROJECT

FROM 1969 TO PRESENT DAY, FLEMING CONSTRUCTION GROUP HAS HELPED BUILD TULSA'S GREEN VALLEY CENTER

PROJECT SCOPE

- Speculative Fit-Out for Industrial Use
- Butler Landmark Structural Steel System
- Site Cast Tilt Wall Panels
- Truss Purlin XT
- MR-24 Standing Seam Roof



FEATURED PROJECT

FROM 1969 TO PRESENT DAY, FLEMING CONSTRUCTION GROUP HAS HELPED BUILD TULSA'S GREEN VALLEY CENTER

PROJECT SCOPE

- Speculative Fit-Out for Industrial Use
- Butler Landmark Structural Steel System
- Site Cast Tilt Wall Panels
- Truss Purlin XT
- MR-24 Standing Seam Roof

RESULTS

- Another Project Joins FCG's Exiting On-Site Portfolio
- Project Qualified for Energy Efficiency Rebate and Tax Incentives
- Completed On-Time and Under Budget
- Zero Safety Incidents



"There's a reason Fleming is the go-to builder for big box industrial in Oklahoma. Seamlessly blending the efficiency of pre-engineered building systems with the durability and appearance of concrete tilt isn't as easy as FCG makes it appear."

- Steve Jagers, Principal GH2 Architects



THANK YOU

View More of Our Featured Projects at:

<https://www.flemingconstructiongroup.com/>



FLEMING
CONSTRUCTION
GROUP